

1:20,000 RECONNAISSANCE FISH AND FISH HABITAT INVENTORY
TRIBUTARY TO MORICE RIVER
460-600600-
UPPER MORICE RIVER PLANNING AREA
FISHERIES / INTERPRETIVE MAP
NORTHWOOD PULP AND TIMBER
MORICE FOREST DISTRICT
1999
MAPSHEET# 093 L 014 Map 3 of 15

1000 0 1000 2000 Meters

Scale 1:20,000
Contour Interval (20m) Projection UTM

Date: 2000/03/24 (yyyy/mm/dd)

Company: EL of TRITON Environmental Consultants Ltd.

STREAM INFORMATION SUMMARY

12345 Interm Locational Point (ILP)
123-123456-12345 Watershed Code

Reach Summary Symbol
Fish Code(s)
CO DV RB
2-12 S2+

Channel Properties
Channel Width
Channel Depth
Stream Classification

Sample Site ID
Sample Site
Watershed Code
Waterbody Identifier

Lake Summary Symbol
Lake (L) or Wetland (W)
Surface Area
Maximum Depth
pH
Conductivity
TDS
Lateral Area
L-175-8.0-6.8-29-20-15
CSU NFC NSC PCC RSC RB WSU
Fish Code(s)

Obstructions
Beaver Dam
Culvert
Falls
Persistent Debris Accumulation
Dam

Features
Eroded Bank
Alluvial Fan
Colluvial Fan
Talus Cone
Rock Outcrop
Slumping Bank
Slump
Bedrock - confined
Landslide Debris
Landslide Area
Boulder Garden
Braided Stream
Rapid
Wetland / Marsh
Subsurface Flow
Tributary
Dewatered Section
Side Channel

Enhancement / Management Activities
Fisheries Sensitive Zone

WSC Information
12AB123 Hydrometric station

Stream Classification
Fish Present (Confirmed)
Fish Not Present (Confirmed)
Fish Present (Inferred)
Fish Not Present (Inferred)
No Visible Channel

TRIM Base Map Anomalies
Field-Identified Stream

Base Map Features
River / Stream - intermittent
River / Stream - indefinite
Lake - intermittent
Lake - indefinite
Marsh
Swamp
Glacier
Icefield
Sand / Gravel Bar
Island
Road - loose surface
Road - rough surface
Index Contour - indefinite
Project Boundary

NOTE: Gradients were calculated from TRIM maps during planning Phase 1 2 3 of this project

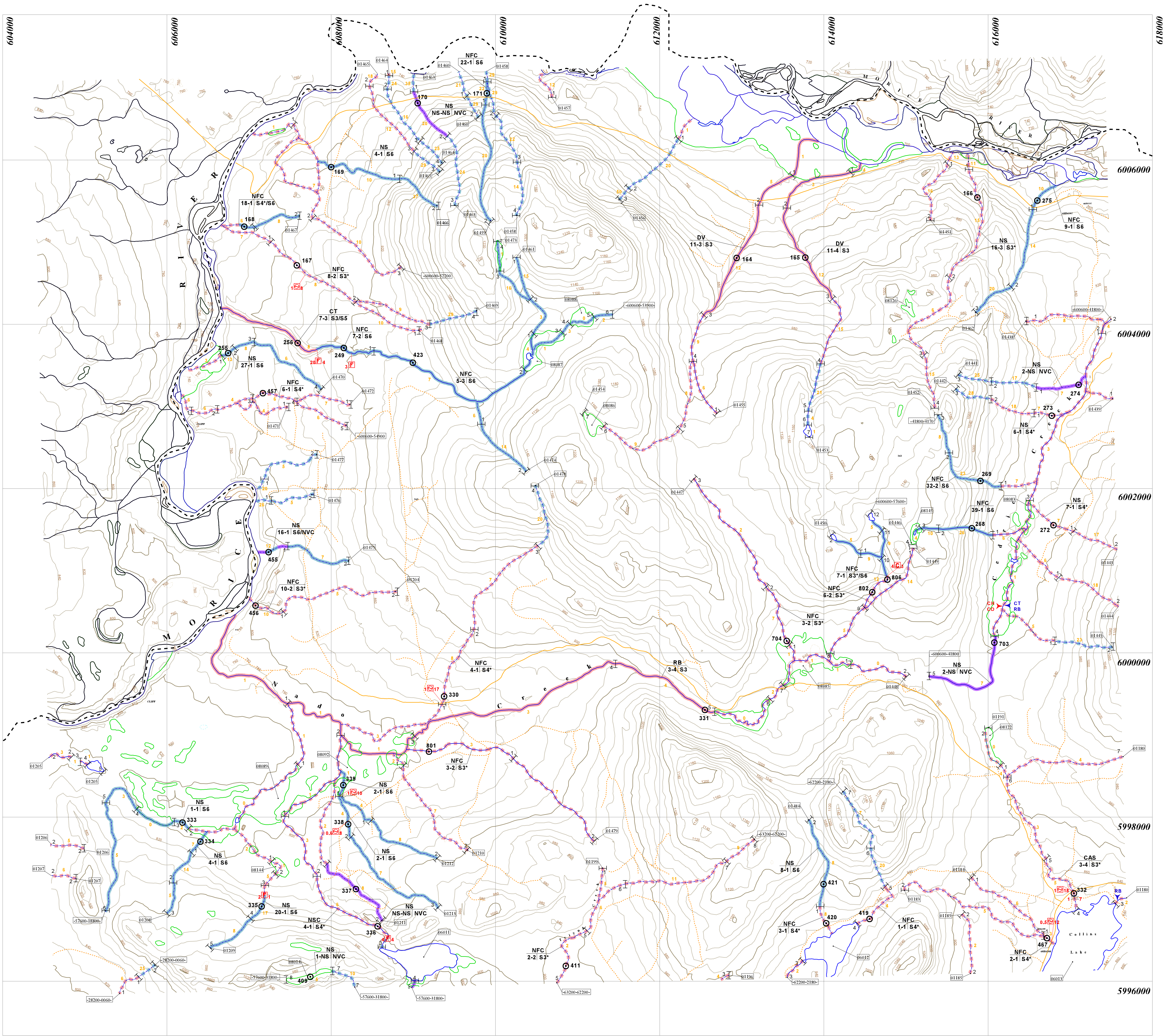
FISH SPECIES

Present		Present		Historical	
CODE	DESCRIPTION	CODE	DESCRIPTION	CODE	DESCRIPTION
NFC	No Fish Caught	LNC	Longnose Dace	Y	End of Fish Use/No Fish Use
NS	Not Sampled	LSU	Longnose Sucker	Y	Fish Presence - Salmon
BB	Burbot	L.T	Lake Trout	Y	Fish Presence - Sport
BT	Bull Trout	LW	Lake Whitefish	Y	Fish Presence - Regionally Significant
CAL	Cossette Sculpin	MPV	Mountain Whitefish	Y	Fish Presence - Other
CAS	Crack Sculpin	PNC	Panoramic Chub	Y	Fish Observation - Salmon
CHI	Chinook Salmon	PL	Pacific Lamprey	Y	Fish Observation - Sport
CO	Coho Salmon	RB	Rainbow Trout	Y	Fish Observation - Regionally Significant
CSI	Largehead Sucker	RSC	Rainbow Shiner	Y	Fish Observation - Other
CT	Cutthroat Trout	SK	Sockeye Salmon	Y	Fish Observation - Other
DV	Dolly Varden	ST	Steelhead	Y	Fish Spawning Limit - Salmon
L	Lamprey	SU	Sucker		
LKC	Lake Chub	WSU	White Sucker		

Source: MELP

PROJECT STUDY AREA BOUNDARY

093L.024 1 of 15
093L.013 2 of 15
093L.014 3 of 15
093L.015 4 of 15
093L.016 5 of 15
093E.092 10 of 15
093E.093 11 of 15
093E.094 12 of 15
093E.095 13 of 15
093E.096 14 of 15
093E.097 15 of 15



"This product has been accepted as being in accordance with approved standards within the limits of Ministry quality assurance procedures. Users are cautioned that interpreted information on this product developed for the purposes of the Forest Practices Code Act and Regulations for example stream classifications, is subject to review by a statutory decision maker for the purposes of determining whether or not to approve an operational plan."

INVENTORY SOURCE INFORMATION CODES					
CODE	DESCRIPTION	CODE	DESCRIPTION	CODE	DESCRIPTION
BASE	Base Map	LR	LR - Lake Symbol	APP	Arthropods, Planktonic
TRIM	1:20,000 TRIM Maps	INV	Field Inventory	AP	Aerial Photography
NTS	1:50,000 NTS Maps	SS	Summary	VID	Video
OTH	Other Map Source	N/A	Not Applicable	VPC	Video, Corrected
STR	Stream Symbol	OTH	Other	FBH	Fish Habitat Information
INV	Field Inventory	LOC	Location Information	ENV	Environmental Inventory
SS	Summary	PDE	Field Estimate	ENV	Environmental Inventory
N/A	Not Applicable	PDG	Field GPS	N/A	Not Applicable
OTH	Other	APR	Arthropods, Estimate	OTH	Other

FOREST PRACTICES CODE RIPARIAN CLASSES (STREAM CLASSIFICATION)				
Riparian Class	Average Channel Width (m)	Reserve Zone Width (m)	Management Zone Width (m)	Total RMA Width (m)
S1 Large River	> 100	0	100	100
S2	> 5 < 20	10	20	50
S3	1.5 < 5	20	30	40
S4	< 1.5	0	30	30
S5	< 3	0	30	30
S6	< 3	0	20	20

BASE MAP INFORMATION

Projection: UTM

Datum: NAD83

UTM Zone: 9

INVENTORY SOURCE INFORMATION

BASE: TRIM

LOC: FDG

HAB: INV

DATE INV: 1998/08/23

STR SYM: INV

LK SYM: N/A

FISH: INV

INV MGNT: MELP